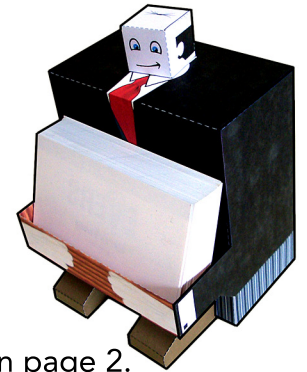


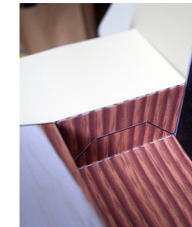
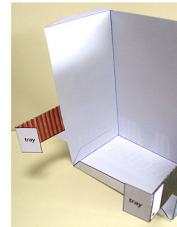
BCI Butler

business cards vendor's tray



INSTRUCTIONS: BODY & TRAY

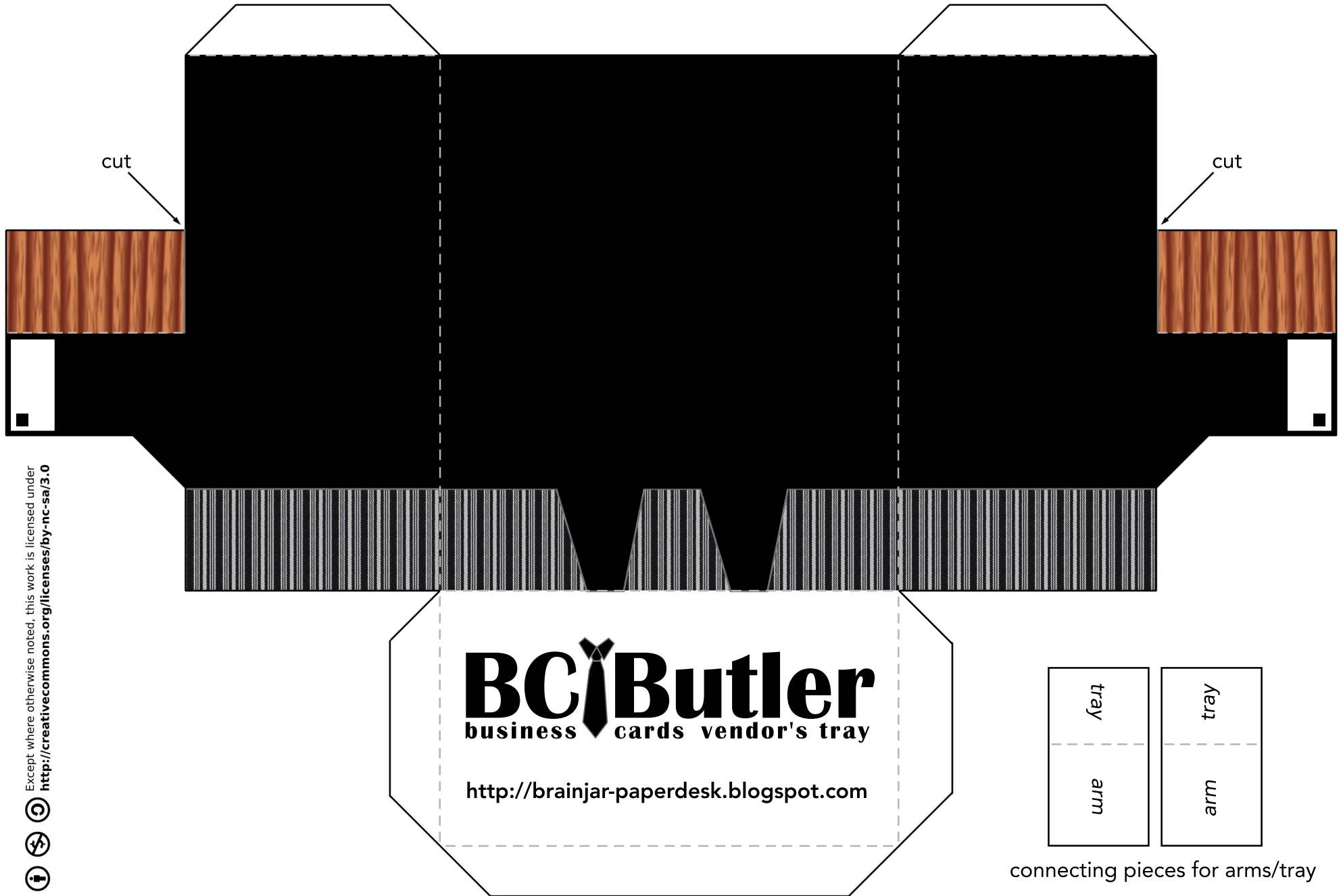
- glue larger part with arms (page 2) together first.
- for the arms and the tray there are connecting pieces on page 2.
- fold arms and glue part of the connecting piece inside, bending other part 90 degrees to hold tray later.
- don't forget the cut-line at the lower part on the front body part (to the left)
- stick flap from tray through cut-line in body front, glue inside (downwards).
- now glue body front part to the rest of the body.
- connect tray to the arms. First fold/glue the front tray part together with the arms connecting pieces, then glue the flaps of the tray to the arms.



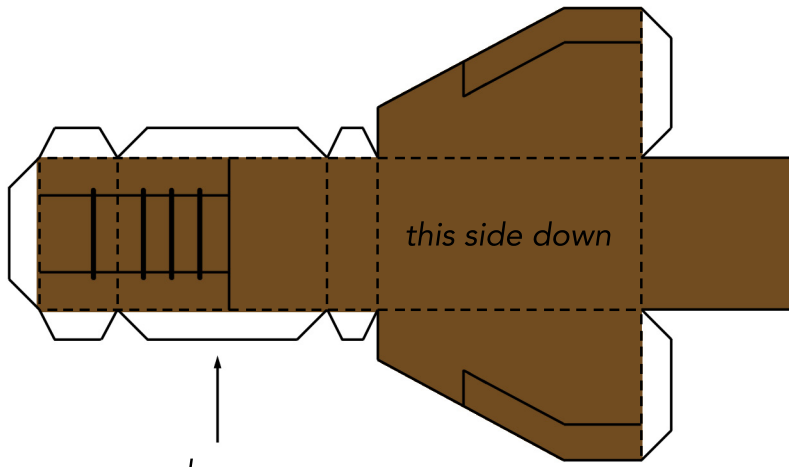
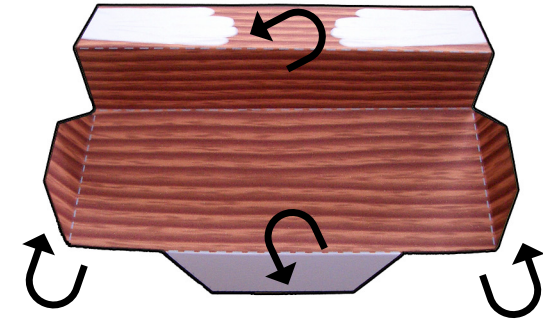
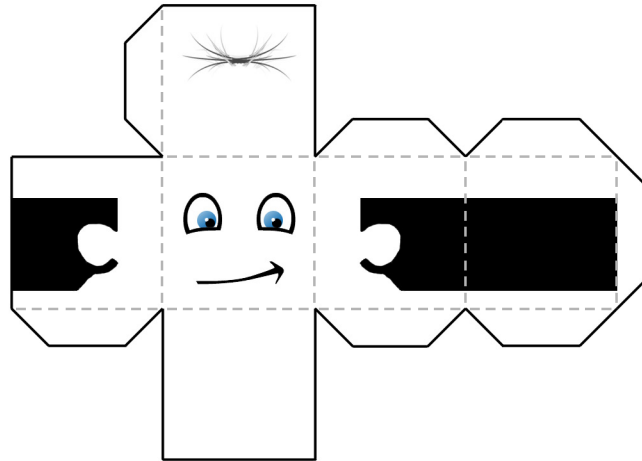
The tray was designed to hold 50 business cards in format 8,5cm x 5,5cm. Before closing the top from the body part, you should put some additional weight into the box - best same weight as your business cards, approx. 60g. The shoes will add extra stability as well. This will help the model not to topple over when people withdraw cards.



<http://brainjar-paperdesk.blogspot.com>



connecting pieces for arms/tray



shoes

